

RETAIL DEVELOPMENT

Orange and Michigan
Orlando, FL

SPACE AVAILABLE:

1.9 Acres

ZONING:

AC-2

TRAFFIC COUNT:

41,342

POPULATION:

1 Mile	7,947
3 Mile	37,061
5 Mile	282,667

INCOME:

1 Mile	\$58,222
3 Mile	\$40,042
5 Mile	\$43,391

HIGHLIGHTS:

Orange Avenue Frontage
Going Home Side of Intersection
Busy Traffic Area



ACQUISITION
CONSULTANTS
ADVANCE • CREATE • PROTECT

720 East Colonial Drive
Orlando, Florida 32803
Phone: 407.373.0930
Fax: 407.373.0929
www.accommercial.com

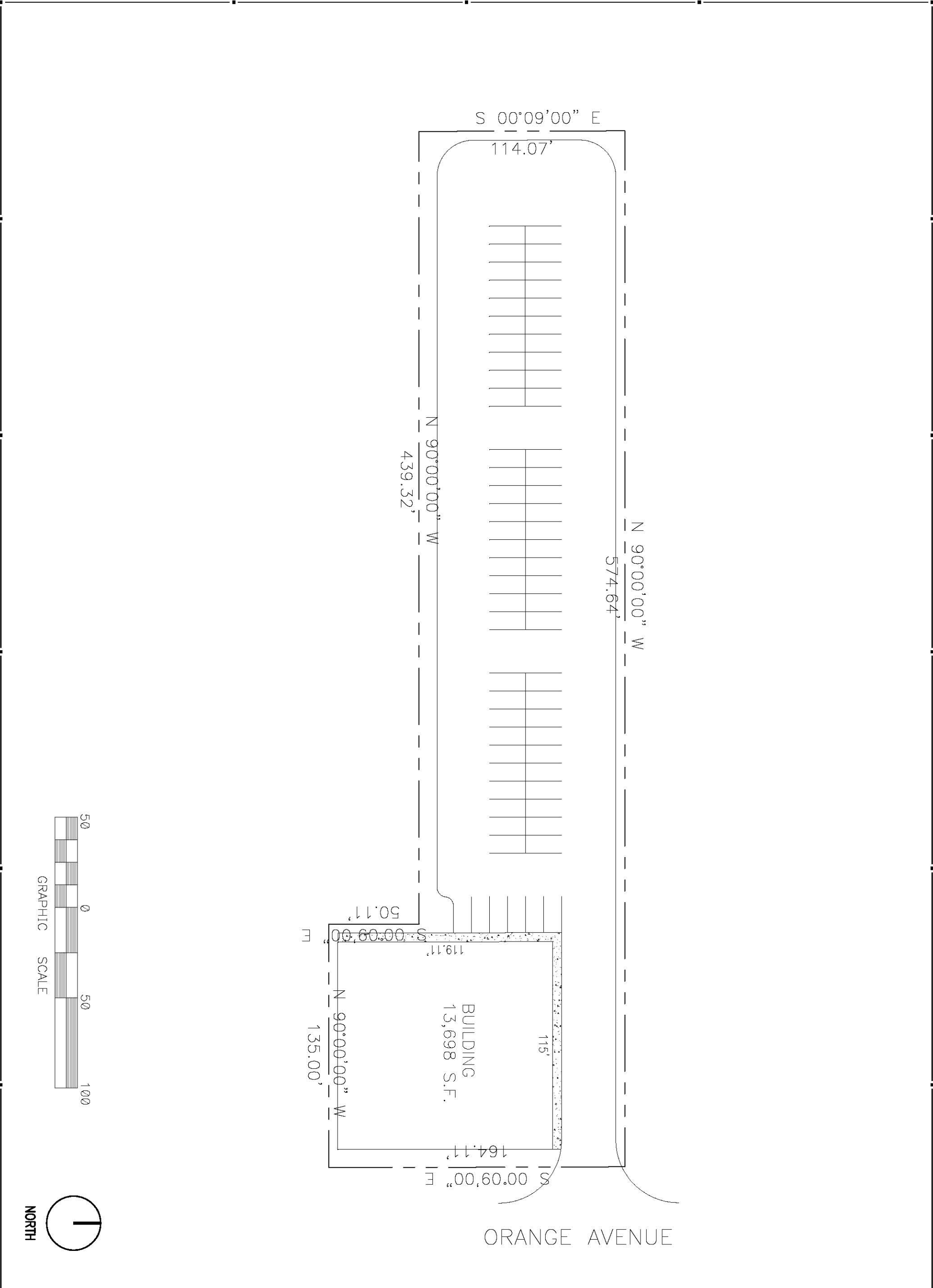
Jonathan Moore

407-373-0930

jmoore@accommercial.com

Lic. Real Estate Broker

We obtained this information from sources deemed to be reliable. However, we have not verified accuracy and make no guarantee, warranty or representation as to the accuracy of this information. This information is given subject to errors, omissions, changes of price, withdrawal without notice and other conditions. Projections, assumptions and opinions are given for example only.



INTERPLAN 3
 ARCHITECTURE
 ENGINEERING
 INTERIOR DESIGN
 PROJECT MANAGEMENT
 AA 003423
 CA 8660

SCALE:
 ROBERT ZIEGENRUS, P.E.

CONSULTANT:

**ACQUISITION
 CONSULTANTS**
 ORANGE AVENUE
 ORLANDO, FLORIDA

COPYRIGHT © 2008
 INTERPLAN 3 ASSOCIATES
 ALL RIGHTS RESERVED.
 NO PART OF THIS DOCUMENT
 MAY BE REPRODUCED OR
 TRANSMITTED IN ANY FORM
 OR BY ANY MEANS, ELECTRONIC
 OR MECHANICAL, INCLUDING
 PHOTOCOPYING, RECORDING,
 OR BY ANY INFORMATION
 STORAGE AND RETRIEVAL
 SYSTEM, WITHOUT PERMISSION
 IN WRITING FROM
 INTERPLAN 3 ASSOCIATES.

PROJECT NO:
 DATE: 08/15/08

CP3

CHECKED:

