



ACQUISITION
CONSULTANTS

RETAIL OUTPARCELS

UNIVERSITY BLVD BY UCF
Orlando, FL



PROPERTY HIGHLIGHTS

- **Two Outparcel Pads**
- Located near University of Central Florida
- Frontage 284'
- Wide Variety of Commerical Uses
- Near Central Florida Greenway, Siemens, Lockheed

TRAFFIC COUNT

E University Blvd	57,586
W University Blvd	56,305

DEMOGRAPHICS

Population (1 mile)	11,325
Population (2 miles)	35,751
Population (3 miles)	90,383
Drive Time Population (5 min)	22,394
Drive Time Avg. HH Income (5 min)	\$62,600



ACQUISITION
CONSULTANTS

Acquisitions Consultants, Inc.
710 East Colonial Drive
Orlando, FL 32803
Phone: 407-373-0930
Fax: 407-373-0929
www.accommercial.com

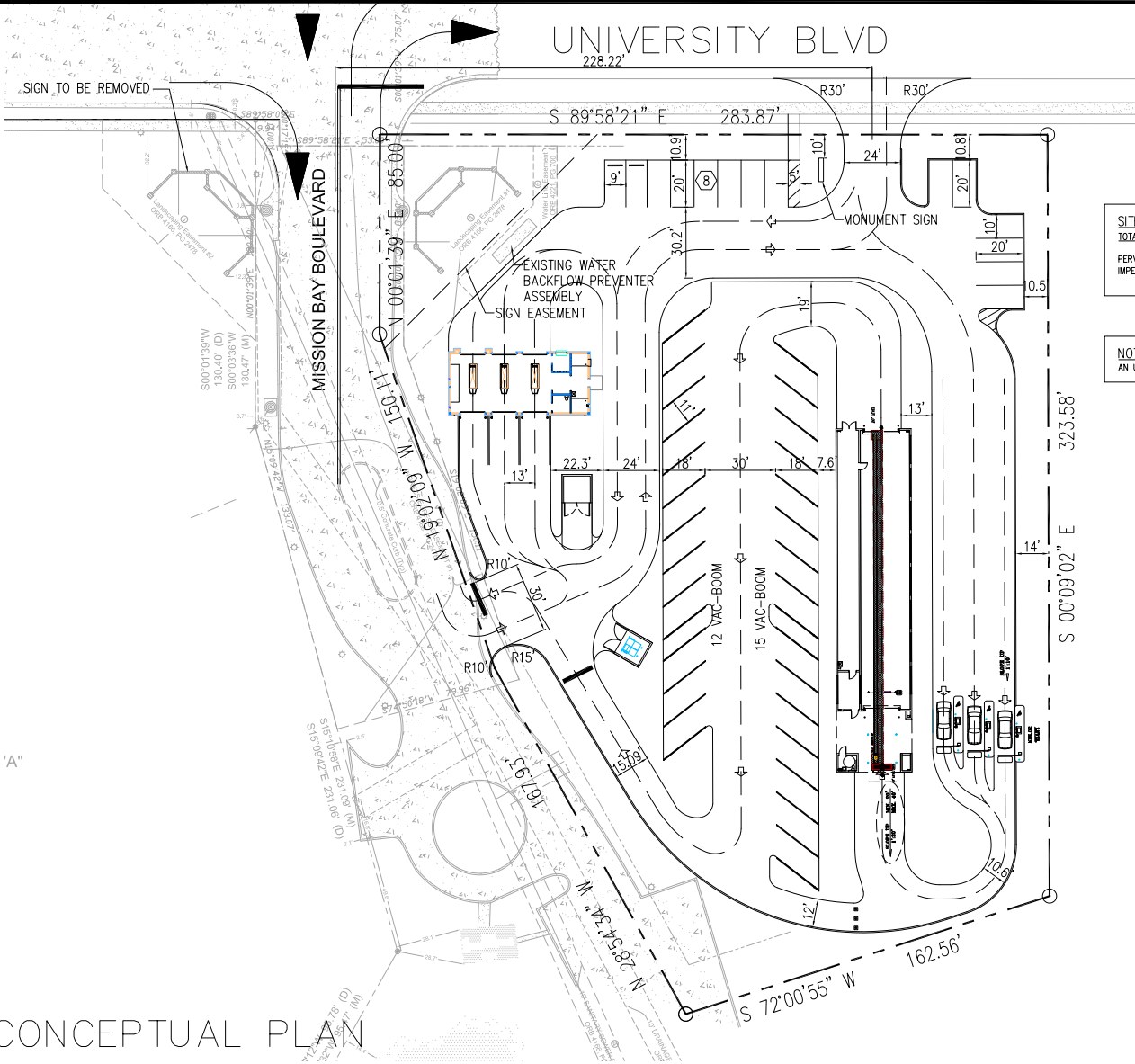
JONATHAN MOORE – LICENSED BROKER

Direct: 321.800.2014

Jamoore@accommercial.com

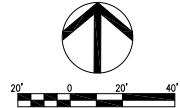
We obtained this information from sources deemed to be reliable. However, we have not verified accuracy and make no guarantee, warranty or representation as to the accuracy of this information. This information is given subject to errors, omissions, changes of price, withdrawal without notice and other conditions. Projections, assumptions and opinions are given for example only.

CONCEPTUAL PLAN



SITE DATA
 TOTAL SITE AREA: 85,796.64 SF / 41.97 AC
 PERVIOUS: 28,152.98 SF (+0.65 AC) 32.8%
 IMPERVIOUS: 57,643.66 SF (+1.32 AC) 67.2%

NOTE:
 AN UNDERGROUND STORMWATER SYSTEM WILL BE REQUIRED.



DATE	REVISION

CAR WASH
 UNIVERSITY BLVD.
 ORLANDO, FLORIDA

DATE: 01-06-17
 DRAWN: BA
 CHECKED: RZ

CP36

PROJECT NO.: 2013.146