



**ACQUISITION  
CONSULTANTS**

# 46A Prime Land Retail Corner Lake Mary, FL



## PROPERTY HIGHLIGHTS

- Tremendous Frontage
- Great Location near I-4
- +/- 1.0 Acre, +/- 2.44 Acres or +/- 3.46 Acre Site
- Offsite Retention
- FLUM Zoning: High Intensity Commercial

## TRAFFIC COUNT

SR 46A	30,100
--------	--------

## DEMOGRAPHICS

Population (1 mile)	8,346
Population (3 miles)	63,745
Population (5 miles)	130,323

Day Time Population (1 mile)	8,942
Day Time Population (3mile)	27,363
Day Time Population (5 mile)	59,877
Average Household Income	\$66,639



**ACQUISITION  
CONSULTANTS**

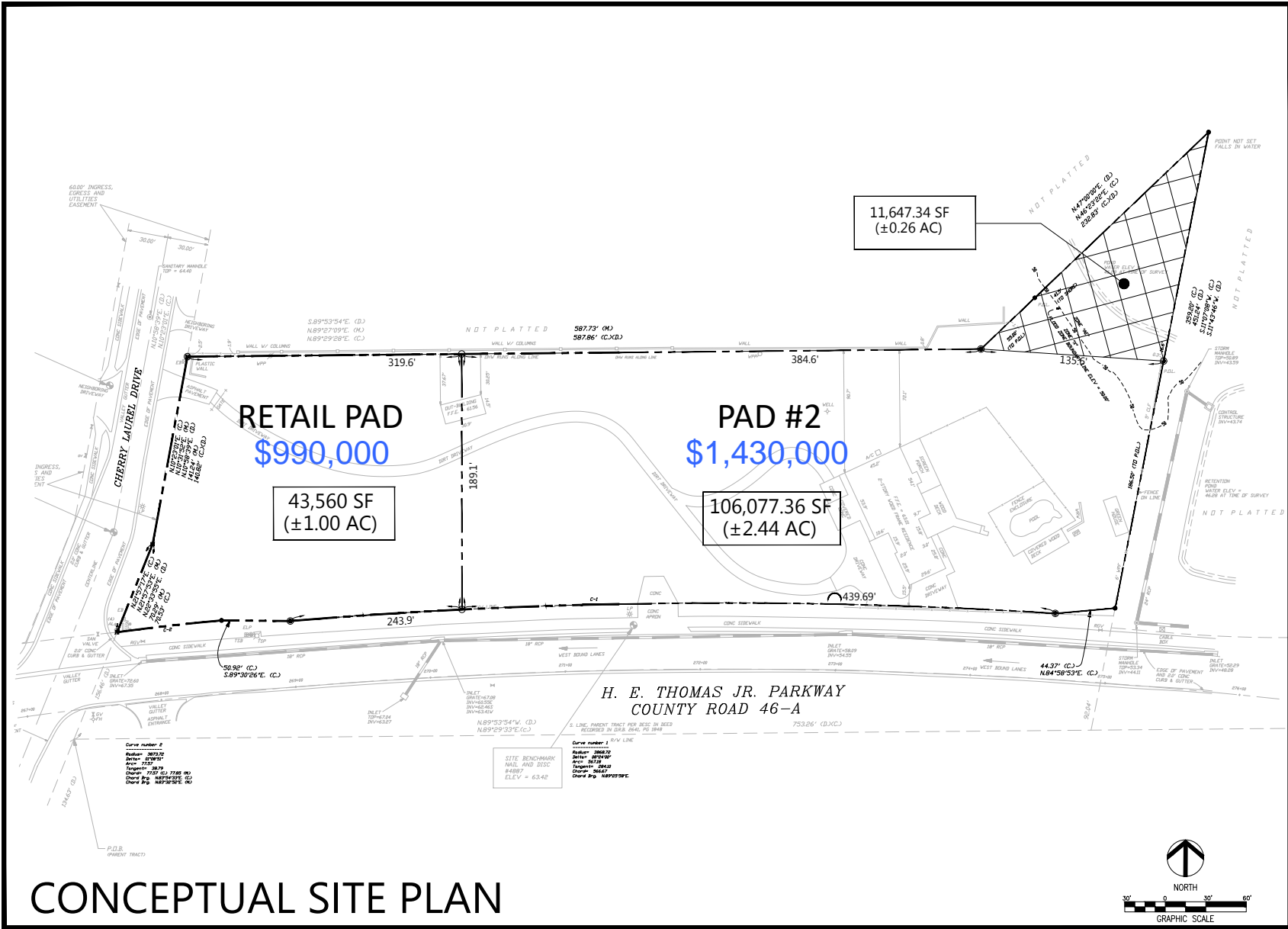
**Acquisitions Consultants, Inc.**  
710 East Colonial Drive  
Orlando, FL 32803  
Phone: 407-373-0930  
Fax: 407-373-0929  
[www.accommercial.com](http://www.accommercial.com)

**JONATHAN MOORE – LICENSED BROKER**

Direct: 321.800.2014

[jamoore@accommercial.com](mailto:jamoore@accommercial.com)

We obtained this information from sources deemed to be reliable. However, we have not verified accuracy and make no guarantee, warranty or representation as to the accuracy of this information. This information is given subject to errors, omissions, changes of price, withdrawal without notice and other conditions. Projections, assumptions and opinions are given for example only.



REVISION	DATE	REVISION	DATE

**NEC COUNTY ROAD 46-A  
AND CHERRY LAUREL DRIVE  
LAKE MARY, FL**

